



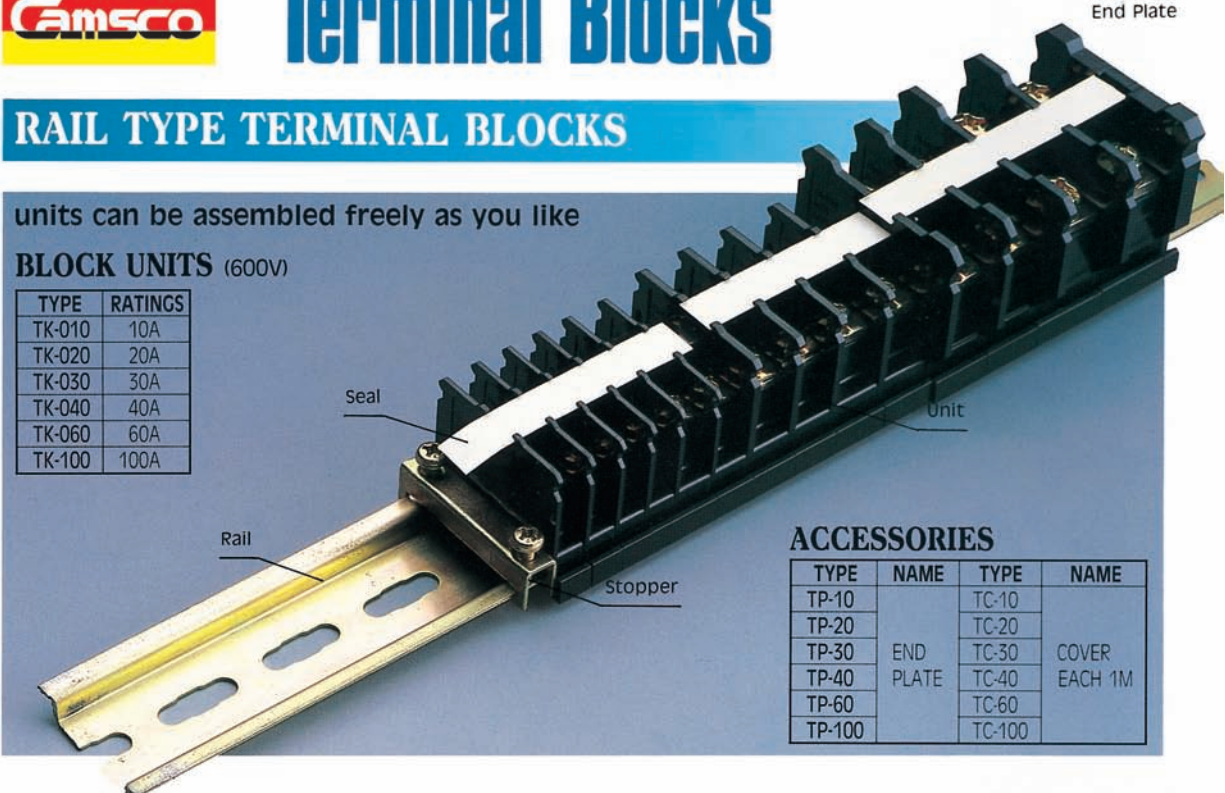
# Terminal Blocks

## RAIL TYPE TERMINAL BLOCKS

units can be assembled freely as you like

### BLOCK UNITS (600V)

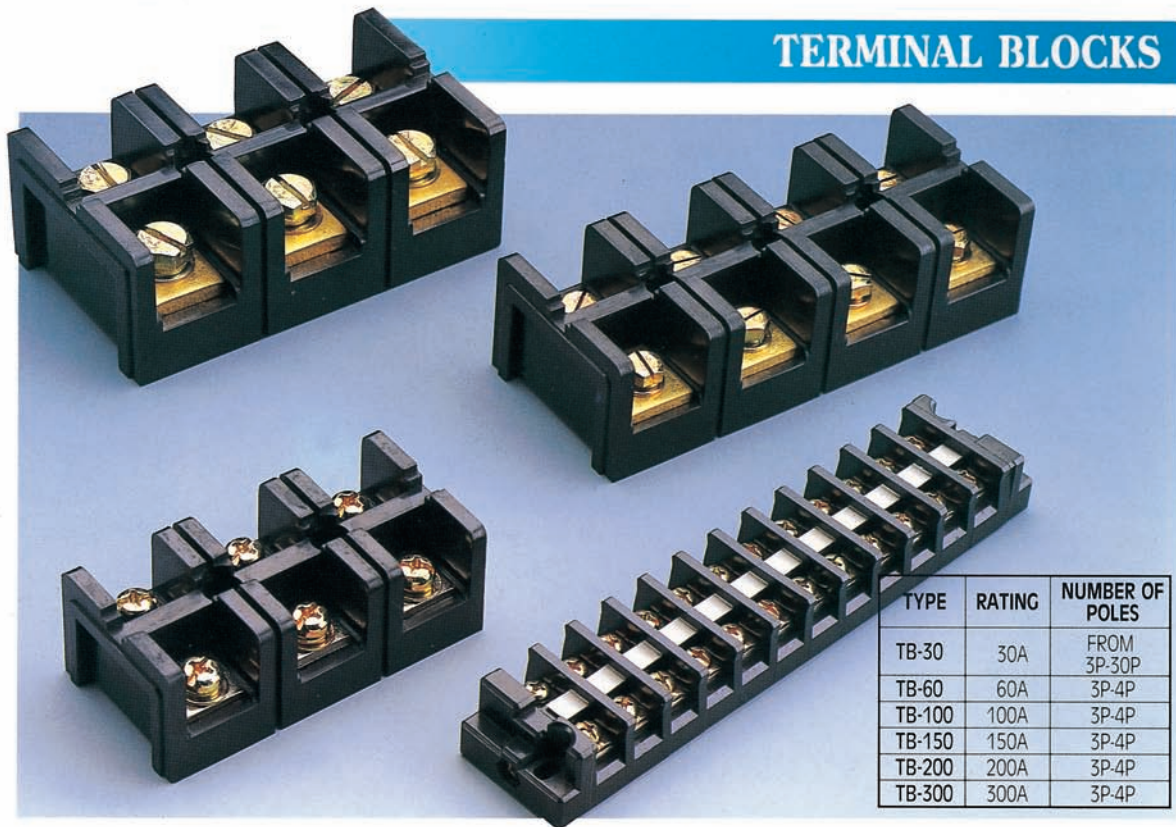
TYPE	RATINGS
TK-010	10A
TK-020	20A
TK-030	30A
TK-040	40A
TK-060	60A
TK-100	100A



### ACCESSORIES

TYPE	NAME	TYPE	NAME
TP-10	END PLATE	TC-10	COVER EACH 1M
TP-20		TC-20	
TP-30		TC-30	
TP-40		TC-40	
TP-60		TC-60	
TP-100		TC-100	

## TERMINAL BLOCKS



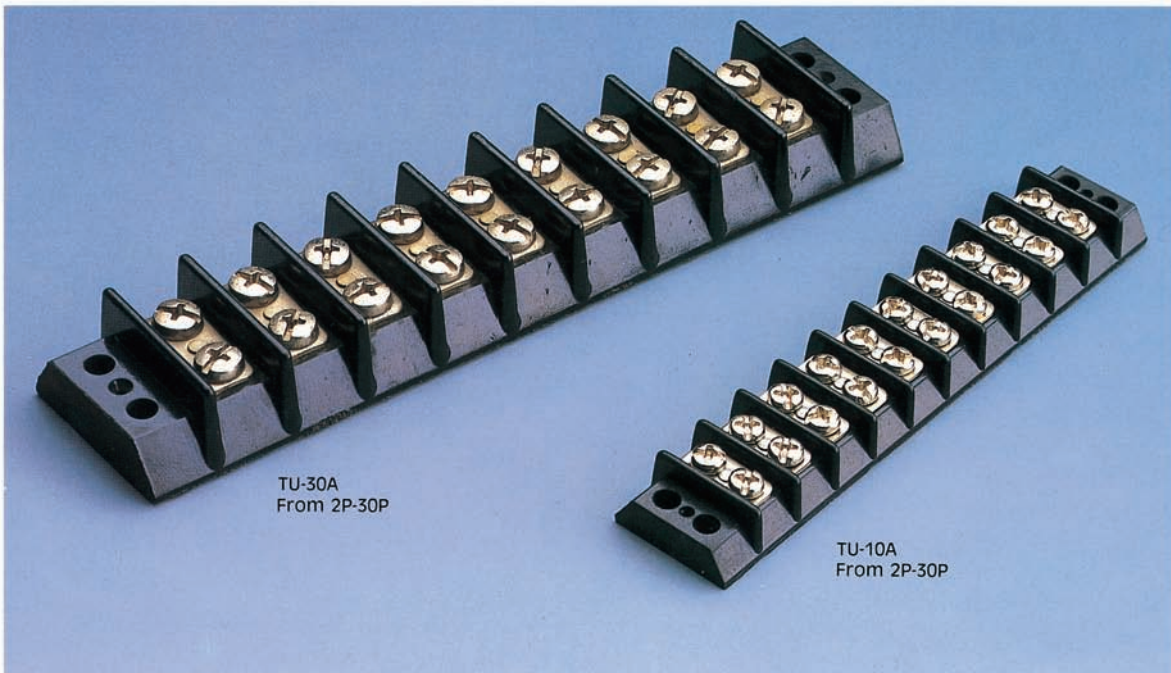
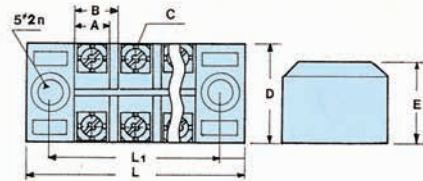
TYPE	RATING	NUMBER OF POLES
TB-30	30A	FROM 3P-30P
TB-60	60A	3P-4P
TB-100	100A	3P-4P
TB-150	150A	3P-4P
TB-200	200A	3P-4P
TB-300	300A	3P-4P



## MOLDED TERMINAL BLOCKS WITH COVER

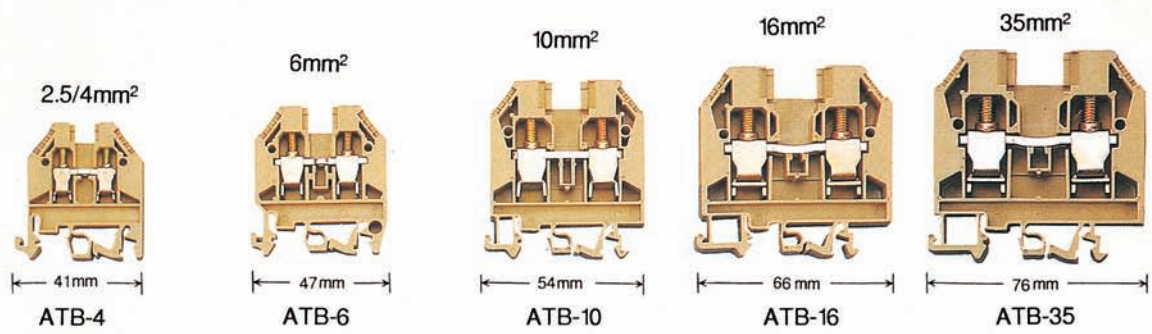


TYPE	RATINGS	NUMBER OF POLES	DIMENSIONS (mm)							PACKING		
			L	L <sub>1</sub>	A	B	C	D	E	Inner Box	Inner Carton	
TB-1503	600V 15A	3	46.5	36.5	7	9	M3	22	17.5	150PCS	6 BOXES	
TB-1504		4	55.5	45.5	7	9	M3	22	17.5	120PCS		
TB-1506		6	73.5	63.5	7	9	M3	22	17.5	100PCS		
TB-1512		12	128.5	118	7	9	M3	22	17.5	50PCS		
TB-2503	600V 25A	3	50.5	40	8	10.5	M4	28	19	120PCS		4 BOXES
TB-2504		4	61.5	51	8	10.5	M4	28	19	100PCS		
TB-2506		6	82.5	72	8	10.5	M4	28	19	70PCS		
TB-2512		12	147	136	8	10.5	M4	28	19	40PCS		





Clip-on mounting  rails



6mm pitch	8mm pitch	10mm pitch	12mm pitch	16mm pitch
750V~900V 4mm <sup>2</sup> 34Amp	750V~900V 6mm <sup>2</sup> 44Amp	750V~900V 10mm <sup>2</sup> 61Amp	750V~900V 16mm <sup>2</sup> 82Amp	750V~900V 35mm <sup>2</sup> 135Amp
AWG No. 22 To 10 40A	AWG No. 22 To 8 55A	AWG No. 18 To 6 600V 75A	AWG 16 To 6 600V 100A	AWG No. 2 600V 140A



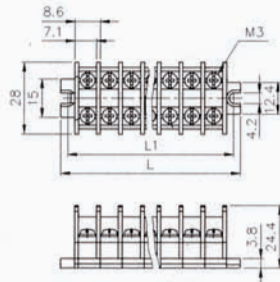
# TERMINAL BLOCKS

units can be assembled freely as you like

## FTB-10 (RAIL TYPE)



$L \approx 16.7 + 8.6 \times n$   
 $L1 \approx 10.3 + 8.6 \times n$   
 $n = P \text{ 数}$

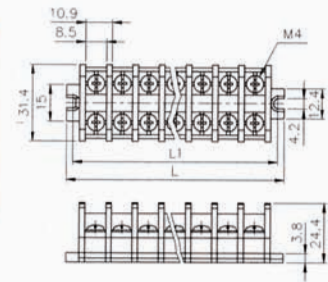


P 数	2	3	4	5	6	7	8	9	10	11	12
L	33.9	42.5	51.1	59.7	68.3	76.9	85.5	94.1	102.7	111.3	119.9
L1	27.5	36.1	44.7	53.3	61.9	70.5	79.1	87.7	96.3	104.9	113.5

## FTB-20 (RAIL TYPE)



$L \approx 17.6 + 10.9 \times n$   
 $L1 \approx 11.2 + 10.9 \times n$   
 $n = P \text{ 数}$

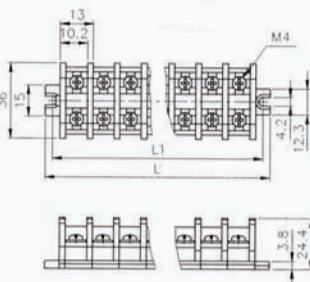


P 数	2	3	4	5	6	7	8	9	10	11	12
L	39.4	50.3	61.2	72.1	83	93.9	104.8	115.7	126.6	137.5	148.4
L1	33	43.9	54.8	65.7	76.6	87.5	98.4	109.3	120.2	131.1	142

## FTB-30 (RAIL TYPE)



$L \approx 18 + 13 \times n$   
 $L1 \approx 11.5 + 13 \times n$   
 $n = P \text{ 数}$

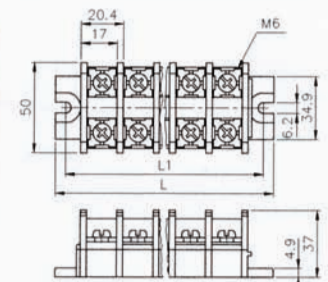


P 数	2	3	4	5	6	7	8	9	10	11	12
L	44	57	70	83	96	109	122	135	148	161	174
L1	37.5	50.5	63.5	76.5	89.5	102.5	115.5	128.5	141.5	154.5	167.5

## FTB-60



$L \approx 33.5 + 20.4 \times n$   
 $L1 \approx 18.5 + 20.4 \times n$   
 $n = P \text{ 数}$

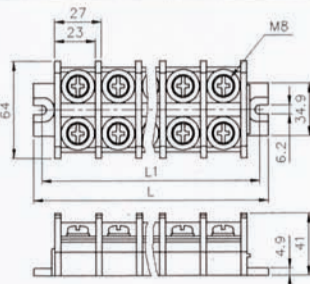


P 数	2	3	4	5	6	7	8	9	10	11	12
L	74.3	94.7	115.1	135.5	155.9	176.3	196.7	217.1	237.5	257.9	278.3
L1	59.3	79.7	100.1	120.5	140.9	161.3	181.7	202.1	222.5	242.9	263.3

## FTB-100

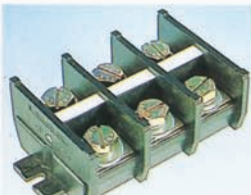


$L \approx 34 + 27 \times n$   
 $L1 \approx 19 + 27 \times n$   
 $n = P \text{ 数}$

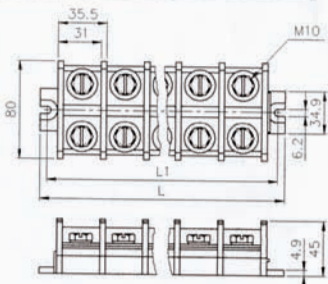


P 数	2	3	4	5	6	7	8	9	10	11	12
L	88	115	142	169	196	223	250	277	304	331	358
L1	73	100	127	154	181	208	235	262	289	316	343

## FTB-200

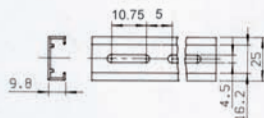


$L \approx 34.5 + 35.5 \times n$   
 $L1 \approx 19.5 + 35.5 \times n$   
 $n = P \text{ 数}$

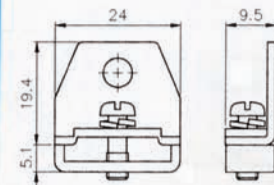


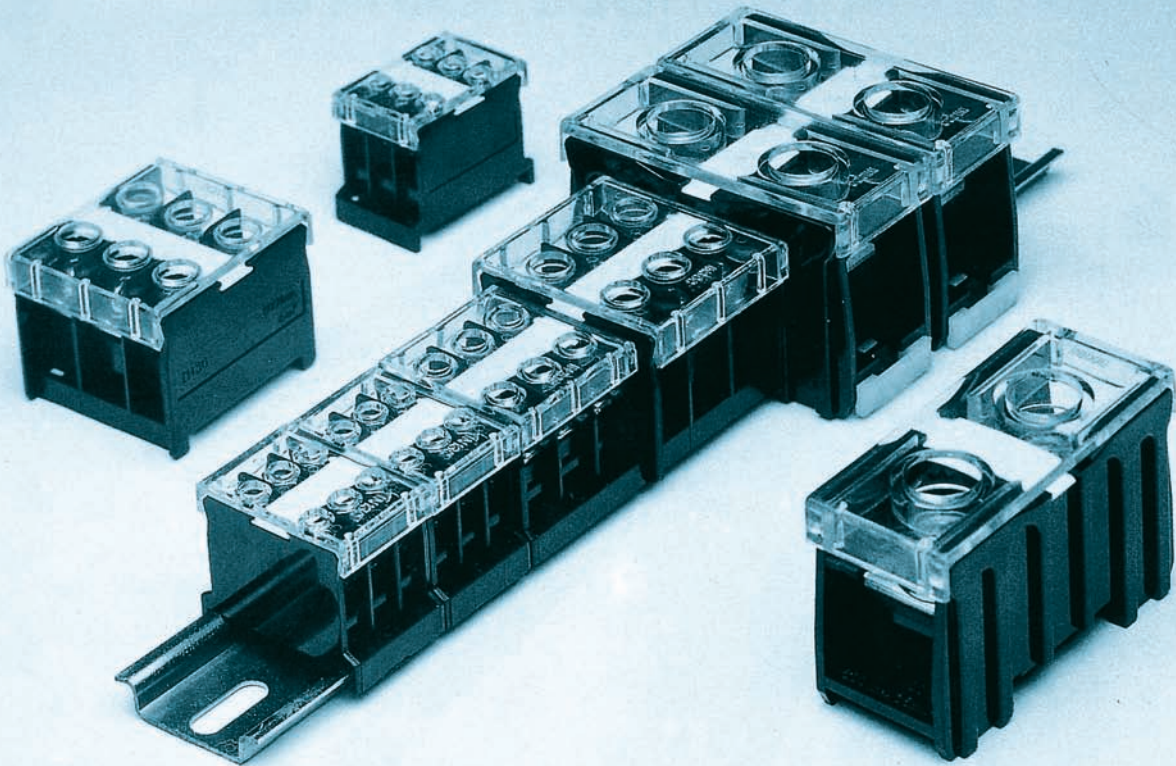
P 数	2	3	4	5	6	7	8	9	10	11	12
L	105.5	141	176.5	212	247.5	283	318.5	354	389.5	425	460.5
L1	90.5	126	161.5	197	232.5	268	303.5	339	374.5	410	445.5

## RAIL



## STOPPER



## RAIL TYPE TERMINAL BLOCK IN SERIES

• THIS TERMINAL BLOCK CAN BE MOUNTED TO THE RAIL BY SINGLE FINGER OPERATION

• RATED VOLTAGE: 600V

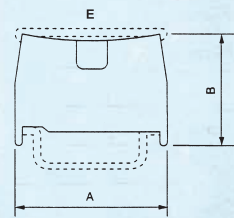
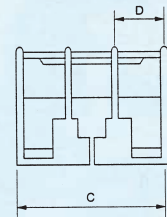
• DIELECTRIC STRENGTH: 2500V, 1MIN

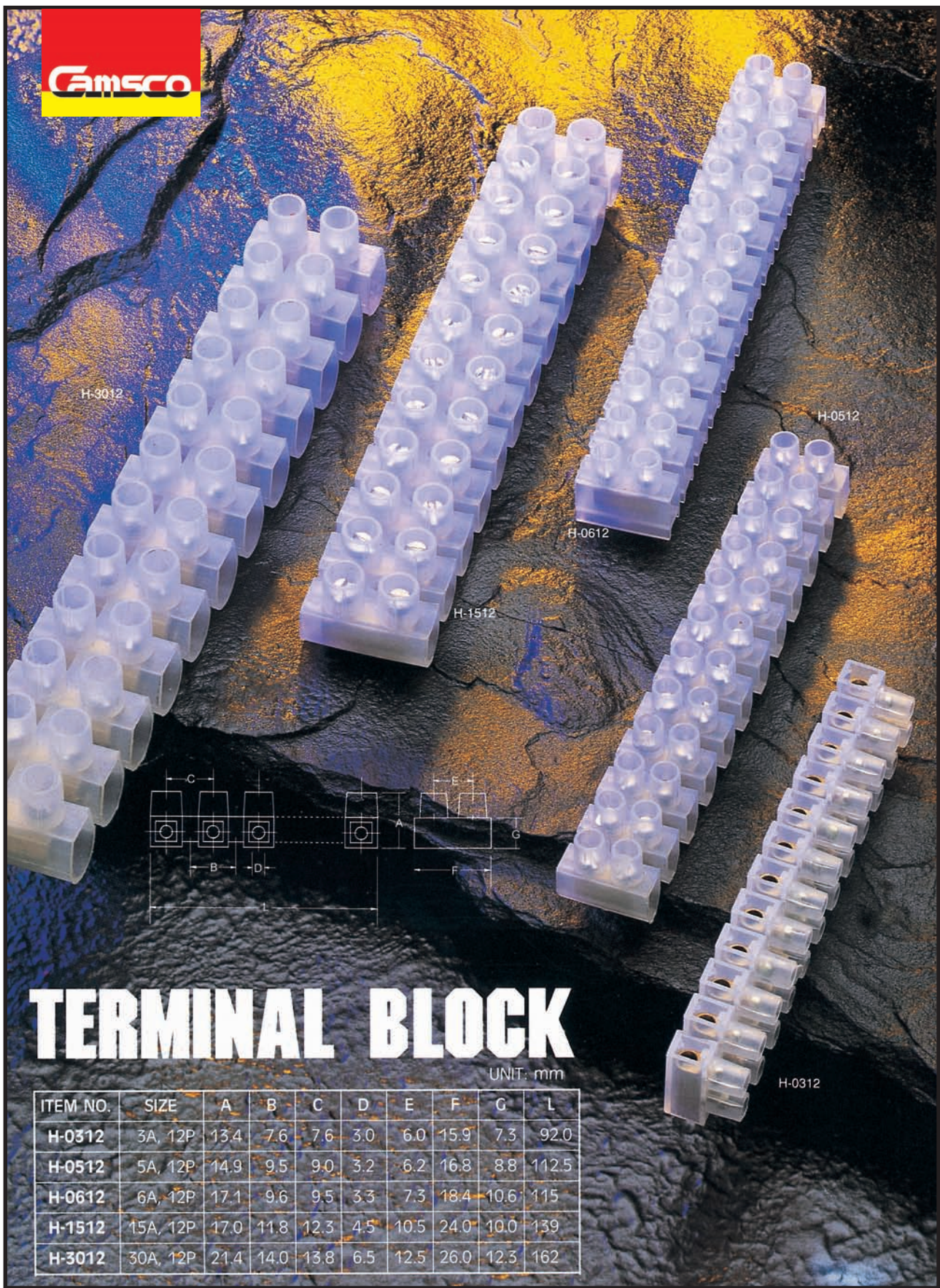
• INSULATION RESISTANCE: 100M $\Omega$  MIN

### ■ SPECIFICATIONS

UNIT: mm

Item No.	RATINGS	DIMENSIONS					PACK
		A	B	C	D	E	
IN12	2P 2mm <sup>2</sup> max 20A	40	30	20	8	37	30 PCS
IN13	3P 2mm <sup>2</sup> max 20A	40	30	25	6.7	37	20 PCS
IN20	3P 3.5mm <sup>2</sup> max 30A	40	30	35	9.7	37	20 PCS
IN30	3P 8mm <sup>2</sup> max 50A	45	34	43	12.2	48	10 PCS
IN411	1P 14mm <sup>2</sup> max 60A	45	34	15.5	13.5	48	30 PCS
IN60	1P 22mm <sup>2</sup> max 90A	56	38	22	17	56	10 PCS
IN100	1P 38mm <sup>2</sup> max 130A	75	45	32	24	73.5	6 PCS
IN200	1P 100mm <sup>2</sup> max 240A	86	57	39	31	86.5	3 PCS
IN400	1P 200mm <sup>2</sup> max 370A	125	73	62	52.3	126	2 PCS





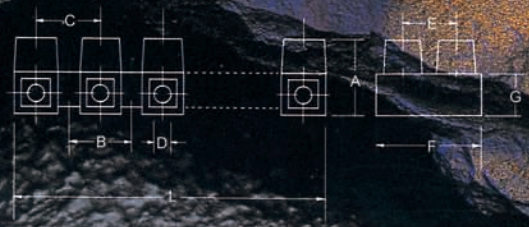
H-3012

H-0512

H-0612

H-1512

H-0312



# TERMINAL BLOCK

UNIT: mm

ITEM NO.	SIZE	A	B	C	D	E	F	G	L
H-0312	3A, 12P	13.4	7.6	7.6	3.0	6.0	15.9	7.3	92.0
H-0512	5A, 12P	14.9	9.5	9.0	3.2	6.2	16.8	8.8	112.5
H-0612	6A, 12P	17.1	9.6	9.5	3.3	7.3	18.4	10.6	115
H-1512	15A, 12P	17.0	11.8	12.3	4.5	10.5	24.0	10.0	139
H-3012	30A, 12P	21.4	14.0	13.8	6.5	12.5	26.0	12.3	162