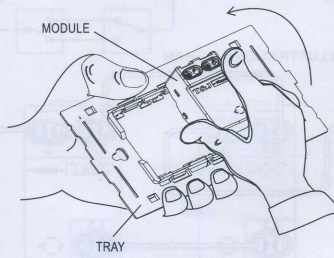


## Fitting Instructions For Electrical Accessories

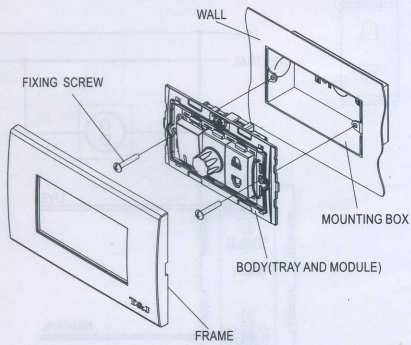
- ◇ Before installation, please read this instruction sheet carefully.
- ◇ If there are any differences between the drawing on this sheet and the actual product, please refer to the product.

### INSTALL THE MODULE TO THE TRAY



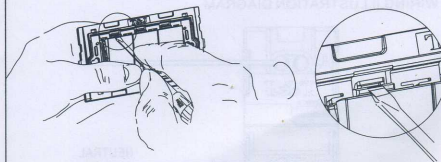
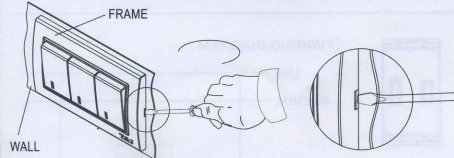
1

### INSTALL THE PRODUCT TO THE MOUNTING BOX



2

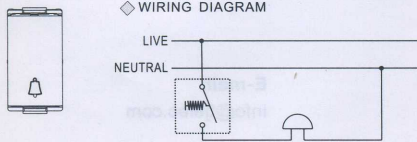
### REMOVE THE FRAME



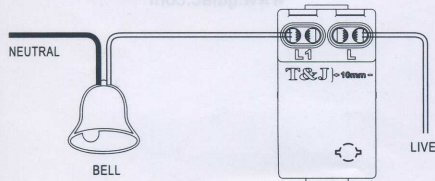
### REMOVE THE MODULE

3

### BELL SWITCH WIRING DIAGRAM

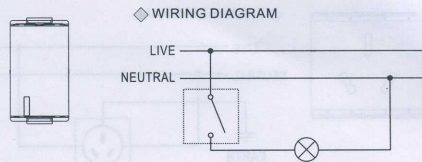


◇ WIRING ILLUSTRATION DIAGRAM

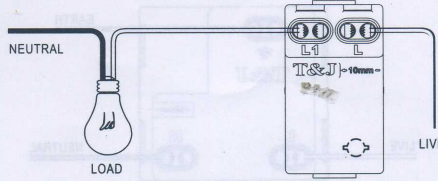


4

### 1 WAY SWITCH WIRING DIAGRAM



◇ WIRING ILLUSTRATION DIAGRAM



5